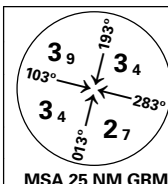
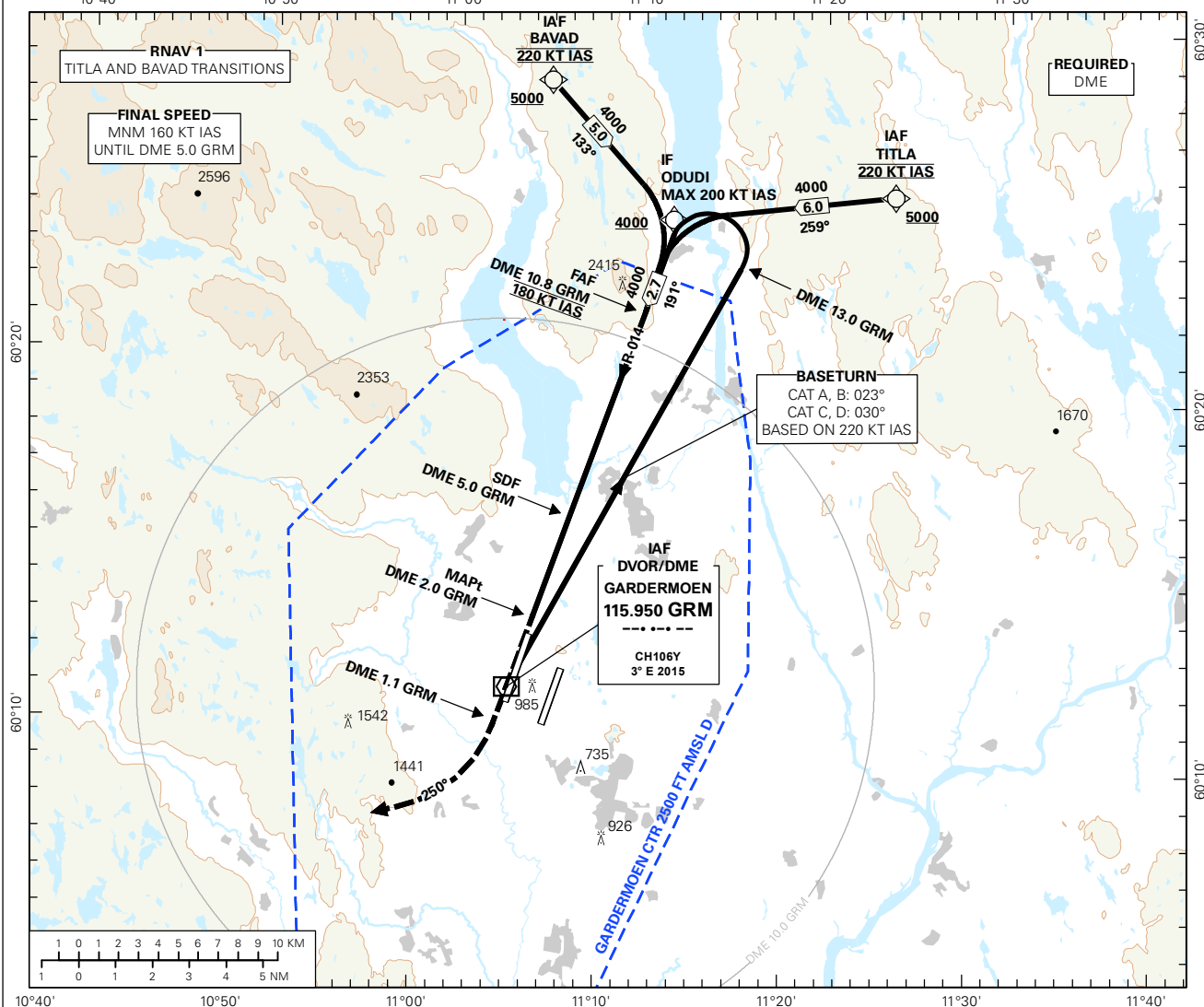


## INSTRUMENT APPROACH CHART - ICAO PLAN VIEW SCALE: 1:350 000

OSLO

**GARDERMOEN**  
**VOR RWY 19R**
**TRANSITION ALTITUDE**  
**7000**


|                        |  |
|------------------------|--|
| ATIS: 126.125          | AD ELEV: 681                               |
| APP: 136.400 120.450   | THR ELEV: 675                              |
| DIR: 136.400 (119.975) | DIST IN NM                                 |
| FIN: 128.900           | ELEV, ALT AND HGT IN FT                    |
| TWR: 118.300 (118.700) | CIRCLING HGT RELATED TO AD ELEV            |
| GND: 121.600           | BEARINGS ARE MAGNETIC - VAR 2.8 ° E (2015) |



| DIST TO GRM | 10          | 9           | 8           | 7           | 6           | 5           | 4          | 3          |
|-------------|-------------|-------------|-------------|-------------|-------------|-------------|------------|------------|
| ALT (HGT)   | 3720 (3045) | 3370 (2695) | 3010 (2335) | 2660 (1985) | 2310 (1635) | 1950 (1275) | 1600 (925) | 1240 (565) |

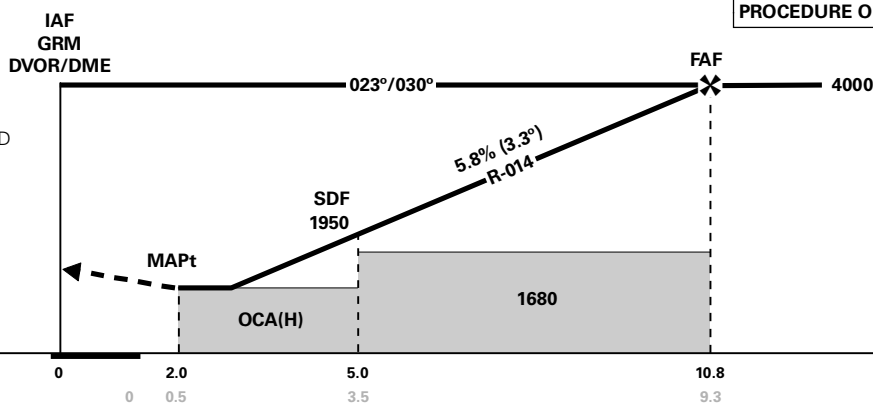
PROCEDURE OFFSET: 1°

**MISSED APCH:**

CLIMB ON R-014 GRM TO GRM.  
 CONTINUE CLIMB ON R-194 GRM TO  
 DME 1.1 GRM. TURN RIGHT TO  
 TRACK 250°. INTERCEPT AND PROCEED  
 ON R-220 GRM CLIMBING TO 5000.  
 EXPECT VECTORING BY OSLO APP.

**RCF:**

CONTINUE ON R-220 GRM. CLIMB  
 TO 5000. AT DME 20.0 GRM  
 TURN RIGHT DCT GRM FOR NEW  
 INSTRUMENT APCH.



|                         |            |     |             |             |            |                      |       |       |       |       |       |
|-------------------------|------------|-----|-------------|-------------|------------|----------------------|-------|-------|-------|-------|-------|
| DME (GRM) →             | 0          | 2.0 | 5.0         | 10.8        |            |                      |       |       |       |       |       |
| THR →                   | 0          | 0.5 | 3.5         | 9.3         |            |                      |       |       |       |       |       |
| CAT OF ACFT             | A          | B   | C           | D           | FINAL APCH | DIST FAF - MAPt: 8.8 |       |       |       |       |       |
| OCA(H)<br>STRAIGHT - IN | 1060 (385) |     |             |             | SPEED      | KT                   | 70    | 90    | 120   | 150   | 180   |
|                         | -          | -   | -           | -           |            | MIN:SEC              | 07:33 | 05:52 | 04:24 | 03:32 | 02:56 |
|                         | -          | -   | -           | -           |            | TIME                 |       |       |       |       |       |
| CIRCLING                | 1280 (599) |     | 2040 (1359) | 2250 (1569) | ROD        | FT/MIN               | 415   | 530   | 710   | 885   | 1065  |

CHANGES: SPEED RESTRICTIONS.

THIS PAGE INTENTIONALLY LEFT BLANK